

Section Thickness: 2"
 Section Heights: 18", 21", 24"

Panel Material: Hot dipped galvanized steel
 24 gauge exterior

Panel Profile: Two horizontal ribs with alternating
 'v' grooves

End & Center Stiles: Box style, 18 gauge
 galvanized steel, full height of section /
 Riveted to inside rails & face of door

Insulation: Not available

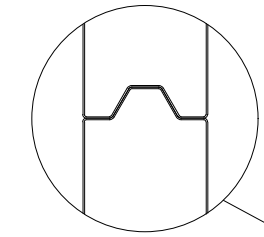
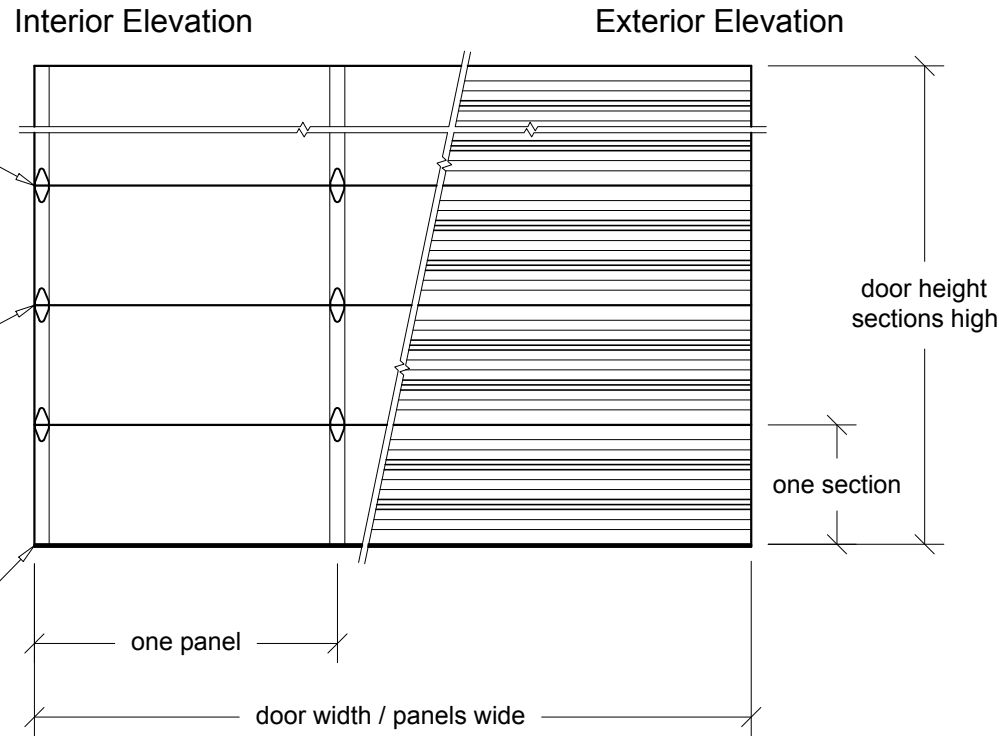
Color: Polyester primer and top coat in C.H.I.;
 White, Sandstone, Brown, Gray, RAL#
 powder-coating exterior / White, RAL#
 powder-coating interior

Glazing Options: 1/8"; Clear DSB, Polycarbonate,
 Tinted, Tempered in 24"x6", 24"x12" /
 Full-View Aluminum

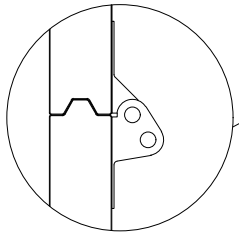
(Full-View Aluminum frame to match size and panel layout of steel section)
 (Check Full-View Aluminum door for color, glass, end stile and rail options)

Values are for standard product, contact C.H.I. for options

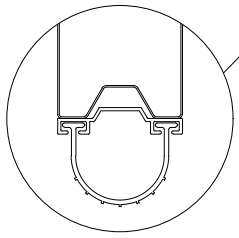
REV. July 2018



Joint Detail
Tongue and groove design



Hinge Detail
Graduated end hinges
≥ 16'-3" wide = double end hinges
minimum 14 gauge



Bottom Seal Detail
Vinyl astragal in
aluminum retainer

Door Width	Panels Wide	Door Height	Sections High
08'-00" to 09'-05"	2	08'-00"	4
09'-06" to 12'-11"	3	08'-03" to 10'-00"	5
13'-00" to 16'-05"	4	10'-03" to 12'-00"	6
16'-06" to 20'-02"	5	12'-03" to 14'-00"	7
20'-03" to 24'-02"	6	14'-03" to 16'-00"	8
24'-03" to 26'-02"	8	16'-03" to 18'-00"	9
26'-03" to 30'-02"	10	18'-03" to 20'-00"	10
30'-03" to 34'-02"	12	Available in 3" height increments	
Available in 1" width increments			

Contact C.H.I. for special sizing outside of listed pricebook charts

Door Mark	Door Width	Door Height	Door Type	Project Name	Prepared By
Door Quantity	Opening Width	Opening Height	Jamb Type	Operation	Date
Quote Number	Panels Wide	Sections High	Color	Door Company	Sheet
Architect	Contractor			www.chiohd.com 1485 Sunrise Drive, Arthur, IL 61911 Email: aia@chiohd.com Phone: (800) 590-0559 Fax: (800) 738-5066	

