



The Door to Quality.

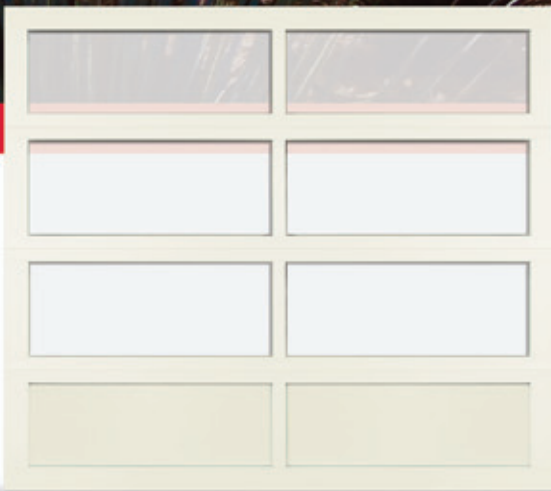
# 3295 ALUMINUM FULL-VIEW DOOR

www.chiohd.com

C.H.I. OVERHEAD DOORS



**Pictured.** 16' x 7' 3295 anodized with optional tinted windows



**8' x 7' 3295,** sections powder coated RAL1013 with frosted glass and solid bottom



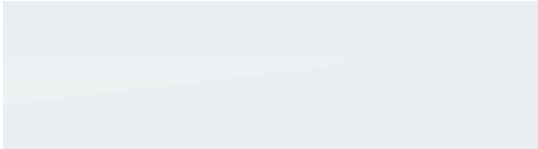



### **A dramatic garage door for dramatic statements.**

The 3295 Series full-view door from C.H.I. perfectly blends the full-vision functionality of this aluminum model with a clean architectural design. This garage door can be powder coated in a multitude of colors, with several glazing options to create the perfect garage door for your home.

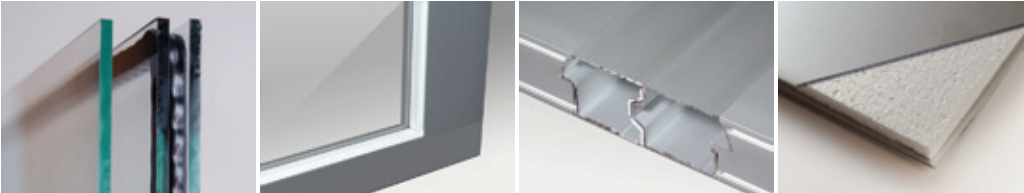
# AESTHETIC. EXQUISITE.

## GLASS OPTIONS

These options improve the natural beauty of your homes exterior while adding to its value.

	Designer Lites	Obscurity Detail
Plain		
Frosted		
Tinted		

## FEATURES



Available in 1/8" non-insulated or 7/16" insulated glass.

Glass replacement is easy using removable inside retainers.

Section joints are tongue-and-groove for a superior weatherseal.

3/8" insulation available with aluminum panels.

## SPECIFICATIONS

- Stylish 2" aluminum stiles with a tongue-and-groove rail frame construction provides a superior joint strength
- 4" top and bottom rail and 2" intermediate rails create additional perimeter strength
- Extrusions feature a closed construction for a rigid frame
- Available in clear anodized or white - optional powder coating available in a multitude of colors
- Hidden through-bolt assembly insures maximum structural integrity
- Optional aluminum panels may be specified to create solid sections and are available as insulated or non-insulated
- Glazing options are 1/8" plain, tinted or frosted (DSB), 1/8" (polycarbonate), 1/4" (tempered) or 7/16" (insulated non-tempered or tempered) glass
- 1/8" plain glass is standard
- Each full-view section utilizes white or black retainers
- Heavy-duty 14 gauge hinges offer stability and longer life
- Long-lasting 10 ball rollers assure consistent, efficient operation
- Bottom U-shaped astragal is standard

VISIT YOUR DOOR PROFESSIONAL AT:

C.H.I. Overhead Doors are manufactured in Arthur, Illinois, USA.



All information presented is based on the specifications and features available at the time of printing and is subject to change without notice.



The Door to Quality.

COLOR SELECTIONS

WHITE

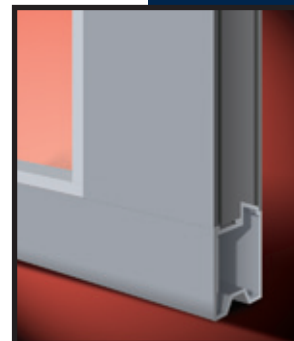
ANODIZED

Note: Refer to samples at your local C.H.I. Distributor for exact color match.

## POWDER COATING



Select powder coat options from a palette of 188 colors. RAL numbers are provided for each color to ensure that your selection is consistent.



## DOOR CONSTRUCTION

This model features closed-constructed aluminum extrusions, assembled with hidden through-bolts for maximum structural rigidity