

Shown in accents woodtones cedar with spade hardware.

## SPECIFICATIONS

### Insulation Type

1-13/16" Polystyrene



### R-value

R-9.65

### Backing

Steel

### Construction Type

Heavy Duty

### Wind Load

Non Impact and Impact Rated

### Warranty

Limited Lifetime on sections  
3 Years on Springs  
6 Years on Hardware

### Extended Coverage

Appearance and Lifetime Package

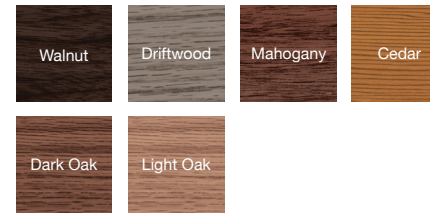
Your Local Garage Door Professional

# 5983 STAMPED CARRIAGE LONG

## COLORS<sup>1</sup>



## ACCENTS WOODTONES<sup>1</sup>



## C.H.I. CUSTOM COLOR MATCHING<sup>1</sup>

<sup>1</sup> Refer to your local C.H.I. Dealer for exact color and woodtones match.

## WINDOW INSERTS



No Inserts



Madison



Cascade



4 Piece Arched Madison



Stockton



2-2 Piece Arched Madison



4 Piece Arched Stockton



3 Piece Arched Madison



2-2 Piece Arched Stockton



3 Piece Arched Stockton

## GLASS



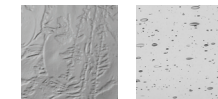
Plain

Frosted



Tinted

Obscure



Glue Chip

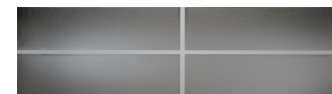
Seeded

Plain is available as polycarbonate.

## DESIGNER GLASS



Newport



Hampton



Florence



LaSalle

LaSalle not available in 18" sections

## EXTERIOR HARDWARE

### Permanent



Spade



Wrought Iron



Barcelona 1



Barcelona 2

### Magnetic



Spade



Ashford



Clavos